



Plenty of space and a superb selection of facilities - that's what you get on this ship. And with so much on offer to keep the kids entertained, it means the whole family can enjoy the magic of cruising.

— WELCOME ABOARD THOMSON MAJESTY —

DINING - WAITER SERVICE

- 1 Seven Seas Restaurant:** Full waiter service restaurant for breakfast, lunch or dinner. Buffet option available at breakfast. Open seating for breakfast and lunch but the cruising tradition of fixed sittings applies for dinner. Please request an early or late sitting at the time of booking or on arrival.
- 2 Four Seasons Restaurant:** Slightly smaller than Seven Seas, this is a more intimate alternative to the main dining room.
- Le Bistro:** Our à la carte eatery is worth paying a little more for.
- Gala night:** Weekly Captain's Cocktail Party and Gala Dinner.



DINING - FLEXIBLE OPTIONS

- 3 Café Royale:** This self-service buffet restaurant offers a superb selection of dishes 24 hours a day.
- Piazza San Marco:** An al fresco venue that's perfect for lunch in the sun.
- Sky Deck:** Sip a refreshing drink whilst soaking up the sun right at the top of the ship.
- Room service:** 24 hours a day - extra charge applies.



ENTERTAINMENT

- 4 Jubilee Lounge:** The focal point of the evening entertainment - this is the place for cabaret, comedy and the late night disco.
- Monte Carlo Casino:** Feeling lucky? Head to this spacious, fully-equipped casino to find all your favourite gaming tables and machines.



FASTFACTS

Pools:	2	Bars:	5	Decks:	10	Cabins:	736	Crew:	600
Restaurants:	5	Lounges:	2	Lifts:	6	Passengers:	1462	Speed:	19 knots

Please note: All our ships are non-smoking. This means you can only smoke in designated areas of the open deck, including cabin balconies.



BARS

- 5 Royal Observatory:** The highest vantage point on the ship - this venue is the perfect place to enjoy simply breathtaking views.
- 6 Royal Fireworks:** Quizzes, bingo and live music are the order of the day in this bar.

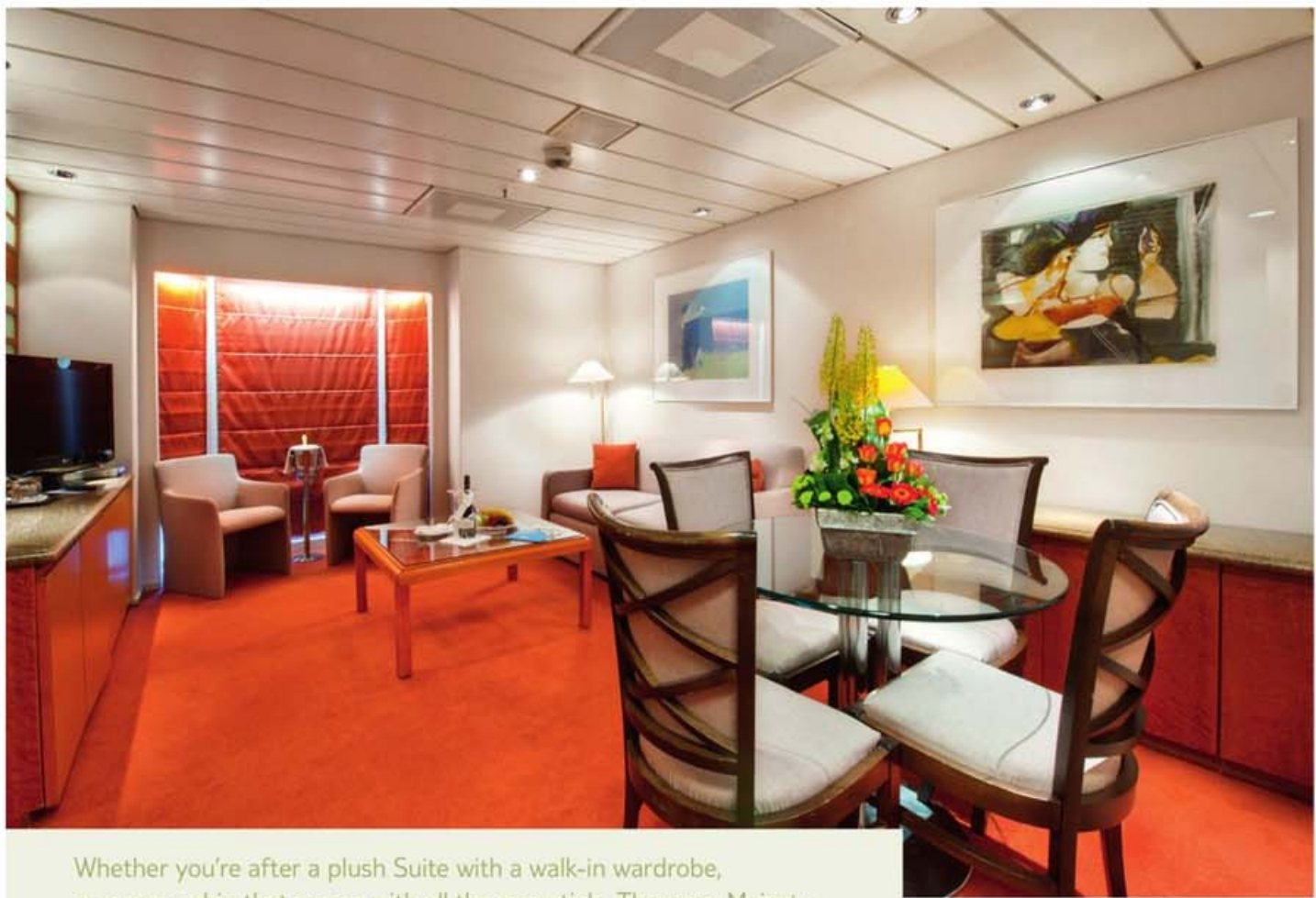
SWIMMING POOLS

- 7 Swimming Pools:** There's a pool suitable for the whole family, and one that's adults-only.

OTHER ACTIVITIES

- Sana Wellness Centre:** With seven treatment rooms, a well-stocked gym and a good-sized salon, Sana Wellness Centre is made for pampering.
- Thomson Kids' Club:** Daily, action-packed activity programmes designed for 3-12 year olds, run by dedicated, fully qualified hosts.
- Other:** Library, internet room and gift shops.





Whether you're after a plush Suite with a walk-in wardrobe, or a cosy cabin that comes with all the essentials, Thomson Majesty gives you a range of accommodation types to choose from.

— CHOOSE YOUR CABIN - THOMSON MAJESTY —



CABIN FACILITIES

All our cabins come with • Air-conditioning • TV • Music System
• Wardrobe space • Hairdryer • Safe (at a charge)

SUITES

- Twin beds, which can be converted to a queen-size double bed
- Living area with sofa, table and chairs
- The sofa converts to a bed and can comfortably accommodate a third or fourth person
- Two bay windows
- En suite bathroom with bath, shower, WC and bathrobes
- Walk-in wardrobe
- DVD Player
- Minibar
- Tea and coffee making facilities
- Suites are 37m²

Premier Service available see page 27



JUNIOR SUITES

- Either twin beds, which can be converted to a queen-size double bed, or a fixed queen-size double
- Living area with sofa, table and chairs
- The sofa converts to a bed and can comfortably accommodate a third or fourth person
- One bay window and a picture window
- En suite bathroom with bath, shower, WC and bathrobes
- Walk-in wardrobe, DVD player, minibar
- Tea and coffee making facilities
- Junior Suites are 23m²

Premier Service available see page 27



OUTSIDE & OUTSIDE PLUS CABINS

- Have either two single beds convertible to a queen-size double bed or a fixed double
- Picture window
- Three and four berth cabins have twin beds and one or two upper berths which fold away
- En suite bathroom with shower and WC
- Outside Plus cabins have a fridge and extra wardrobe space
- Outside cabins are 10m², Outside Plus cabins are 13m²

Please note: the view from some Outside and Outside Plus Cabins may be obstructed by lifeboats. Reserve your cabin to guarantee an unobstructed view.



INSIDE & INSIDE PLUS CABINS

- Inside cabins have either two single beds convertible to a queen-size double bed or a queen-size fixed double
- Three and four-berth cabins have twin beds and one or two upper berths which fold away
- En suite bathroom with shower and WC
- Inside Plus cabins have a fridge and extra wardrobe space
- Inside cabin sizes are between 10m² and 11m², Inside Plus cabin are 13m²



The cabins shown are representative of the general standard of cabins on board. Your cabin may differ slightly in décor, design and size.

THOMSON MAJESTY DECK PLAN

Your Key to cabin categories

- Suite
- Junior Suite
- Deck 8/9 Outside Cabin
- Deck 8/9 Outside Plus Cabin
- Deck 6/7 Outside Cabin
- Deck 6/7 Outside Plus Cabin
- Deck 3/4 Outside Plus Cabin
- Deck 6/8 Inside Cabin
- Deck 3/4 Outside Cabin
- Deck 3/4 Inside Plus Cabin
- Deck 3/4 Inside Cabin
- Single Cabin/Outside Cabin
- Adapted Cabin for wheelchair use
- #** 3 Berth
- *** 4 Berth
- Converts to double bed
- L shape beds
- L** Fixed double beds

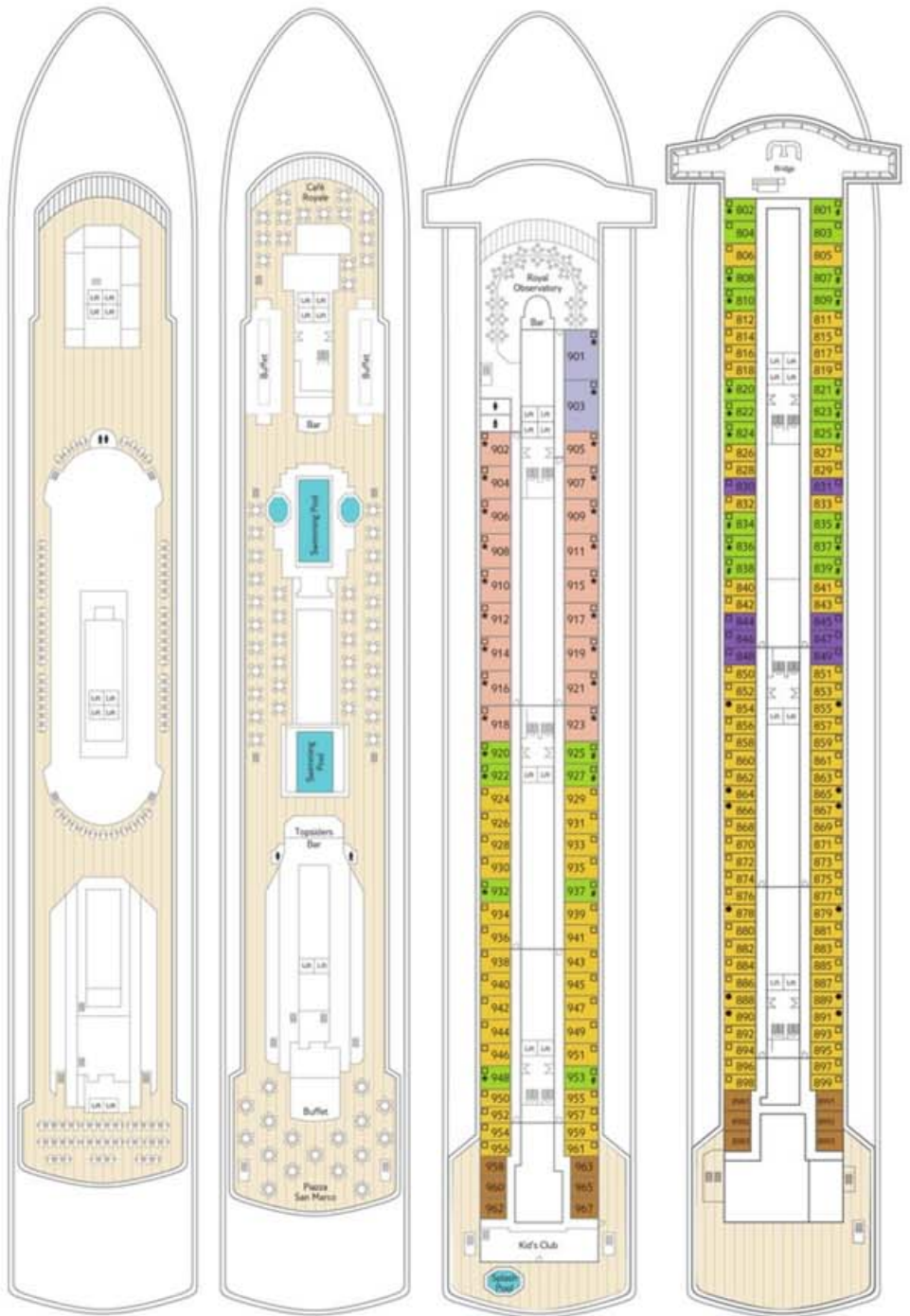
Amenities

5 restaurants, 2 lounges, 5 bars, casino, 2 swimming pools, 2 whirlpools, Thomson Kids' Club with paddling pool, library with internet access, medical centre, wellness centre with sauna, massage & gym, teen video arcade, card/reading room, shops, air-conditioning throughout, worldwide satellite telephone, telex & fax.

Deck plans are provided as a guide only. Size and layout may vary within the same cabin category.

Vital Statistics

Tonnage	40,876 GRT
Length	207 m
Beam (width)	28 m
Speed	19 knots
Decks	10
Lifts	6
Cabins	736
Cruise passengers	1462
Crew and staff	600
Electrical current	110-220v ac
Registry	Malta



Sky Deck (11)

Sun Deck (10)

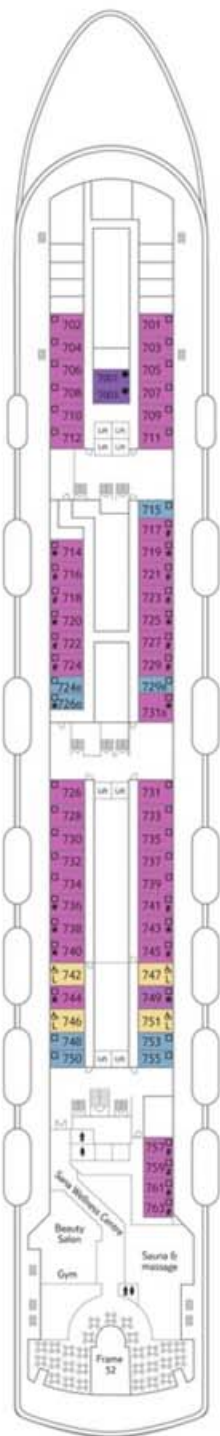
- Café Royale
- Pools
- Topsiders
- Piazza San Marco

Norway Deck (9)

- Royal Observatory
- Kids' Club
- Outside and Outside Plus cabins
- Junior Suites
- Suites

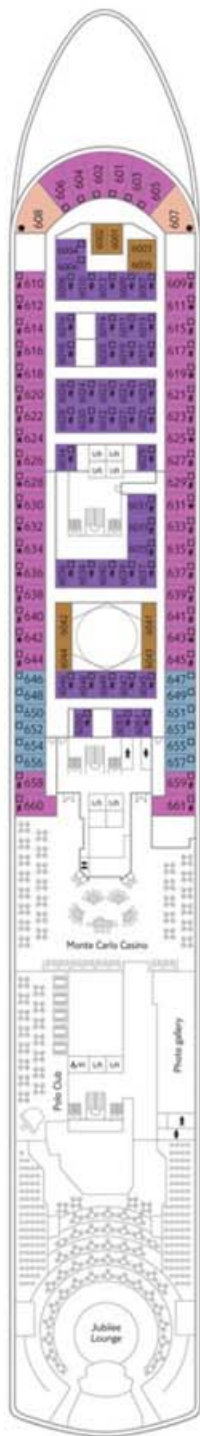
Viking Deck (8)

- Outside and Outside Plus cabins
- Inside cabins



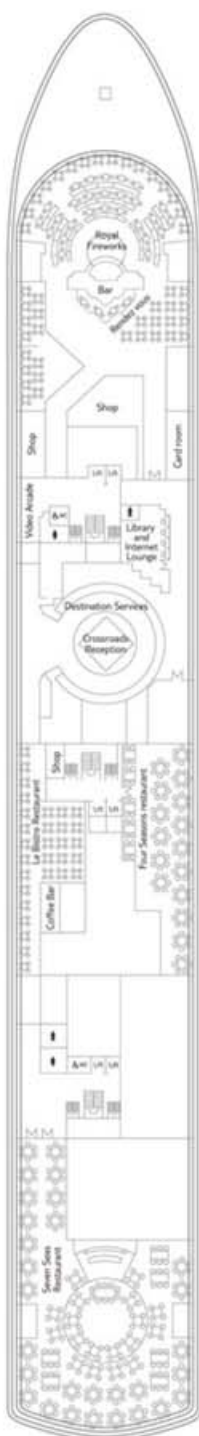
Promenade Deck (7)

- Frame 52
- Sana Wellness Centre
- Cabins adapted for wheelchair use
- Outside and Outside Plus cabins
- Inside and Inside Plus cabins



Majesty Deck (6)

- Jubilee Lounge
- Polo Club
- Monte Carlo Casino
- Outside and Outside Plus cabins
- Inside and Inside Plus cabins



Atlantic Deck (5)

- Seven Seas Restaurant
- Four Seasons Restaurant
- Le Bistro Restaurant
- Rendezvous ■ Video Arcade
- Library and Internet Café
- Coffee Bar ■ Reception
- Royal Fireworks ■ Shops
- Destination Services



Biscayne Deck (4)

- Medical Centre
- Outside and Inside cabins
- Inside and Inside Plus cabins



Caribbean Deck (3)

- Outside and Inside cabins
- Inside and Inside Plus cabins